

SubConn® Low Profile

7 contacts

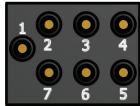
Connector specifications

Voltage rating	600 V AC rms
DC rating	85% of above AC rating
Current rating	10 A per contact (max 40 A per connector)
Insulation resistance	> 200 Mohm
Contact resistance	< 0.01 ohm
Wet matings	> 500
Temperature rating (water)	- 4 to 60°C, 25 to 140°F
Temperature rating (air)	- 40 to 60°C, - 40 to 140°F
Storage temperature rating	- 40 to 60°C, - 40 to 140°F
Depth rating	700 bar, 10,000 psi
Depth rating PEEK	300 bar, 4,350 psi

Material specifications

Connector body	Chloroprene rubber
Bulkhead body	Brass, stainless steel, titanium, anodised aluminium or PEEK
Contacts	Gold plated brass UNS - C36000
O-rings	Nitrile
Locking straps	Chloroprene rubber
Inline cable (60 cm, 2 ft)	16 AWG 1.31 mm ² chloroprene rubber
Bulkhead leads (30 cm, 1 ft)	18 AWG 0.82 mm ² tagged PTFE

Face view (male)

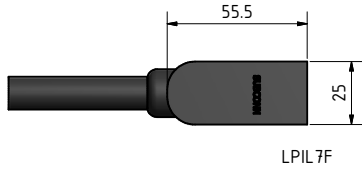


Inline cable colour code

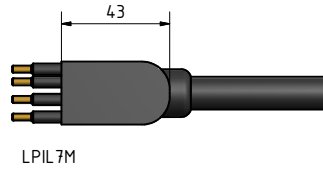
1 Black	4 Green	7 White/black
2 White	5 Orange	
3 Red	6 Blue	

Nominal cable outside diameter (OD)

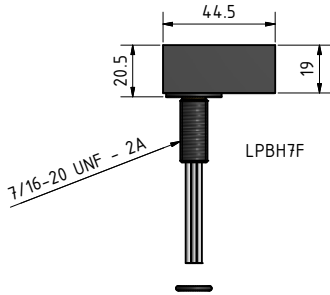
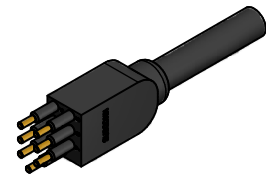
7 conductor cable 0.520", 13.2 mm



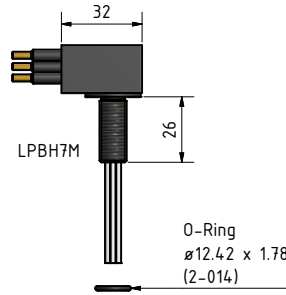
LPIL7F



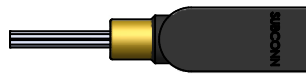
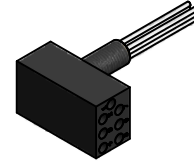
LPIL7M



LPBH7F



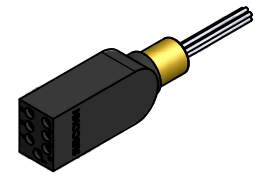
LPBH7M



LPOM7F



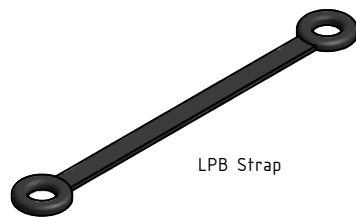
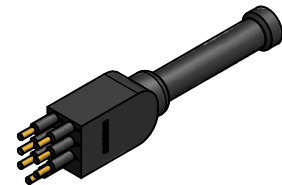
LPOM7M



LPDC7F



LPDC7M



LPB Strap

Drawing information

Dimensions in mm (1 mm = 0.03937 inch)
Threads in inches (1 inch = 25.4 mm)