

# SubConn® Power Ethernet Low Profile

## 13 contacts

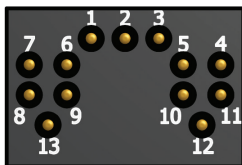
### Connector specifications

Voltage rating	600 V AC rms
Voltage rating on data wire	250 V AC rms
DC rating	85% of above AC rating
Current rating on power wire	4 A per contact (max 16 A per connector)
Data rate	1 Gbit/s (up to 75 m)
Insulation resistance	> 200 Mohm
Contact resistance	< 0.01 ohm
Wet matings	> 500
Temperature rating (water)	- 4 to 60°C, 25 to 140°F
Temperature rating (air)	- 40 to 60°C, - 40 to 140°F
Storage temperature rating	- 40 to 60°C, - 40 to 140°F
Depth rating	600 bar, 8,700 psi
Depth rating PEEK	300 bar, 4,350 psi

### Material specifications

Connector body	Chloroprene rubber
Bulkhead body	Brass, stainless steel or titanium
Contacts	Female sockets in gold plated brass UNS - C36000 Male pins in gold plated beryllium copper
O-rings	Nitrile
Locking straps	Chloroprene rubber
Inline cable (100 cm, 3.3 ft)	4 pair 24 AWG, 0.20 mm <sup>2</sup> PUR Power conductors 4 x 18 AWG, 0.82 mm <sup>2</sup> Screen: Tinned copper braid
Bulkhead leads (100 cm, 3.3 ft)	CAT 5E patch cable, 5 x 20 AWG, 0.52 mm <sup>2</sup> with coloured wires incl. RJ 45 connector (not installed)

### Face view (male)



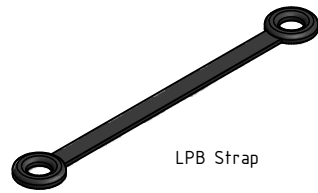
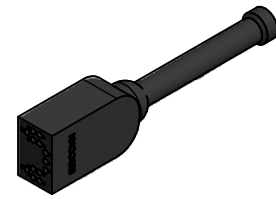
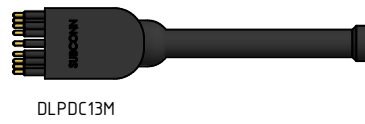
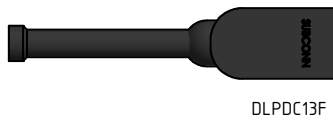
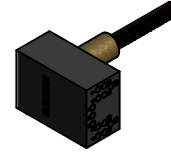
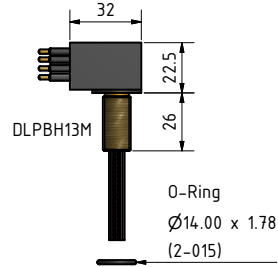
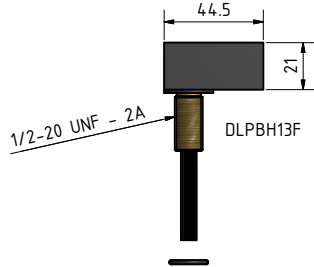
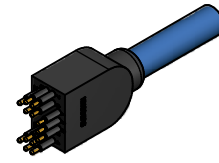
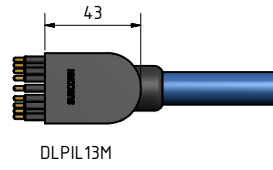
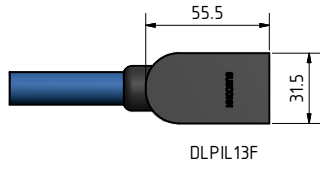
### Inline cable colour code

1: Black	*4-5: Brown, Brown/white	*10-11: Green, Green/white
2: Screen (orange wire on bulkhead)	*6-7: Blue, Blue/white	12: Red
3: White	*8-9: Orange, Orange/white	13: Green

\* Twisted pairs

### Nominal cable outside diameter (OD)

PUR cable 0.550", 13.97 mm



### Drawing information

Dimensions in mm (1 mm = 0.03937 inch)  
Threads in inches (1 inch = 25.4 mm)